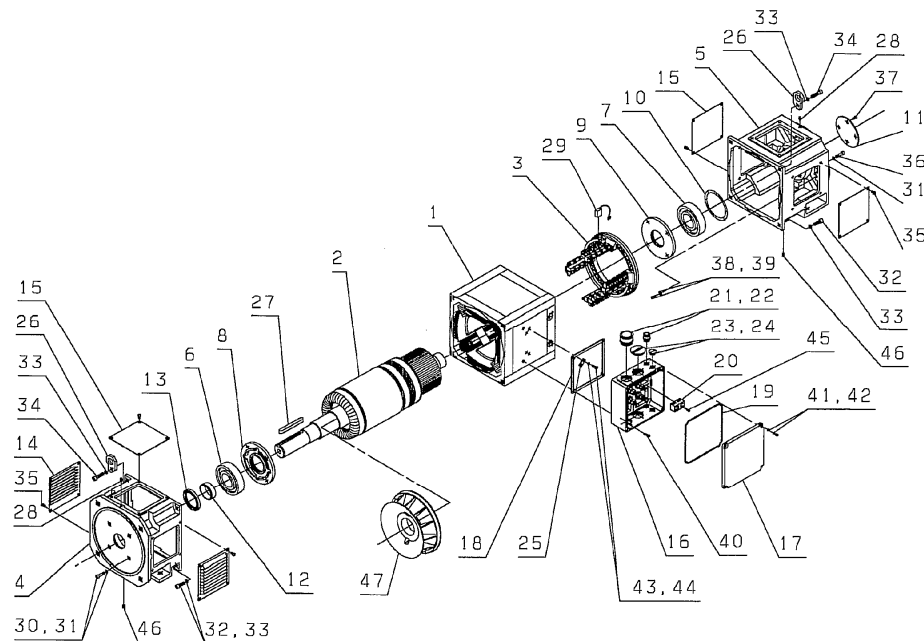


# 1 Spare Parts

## 1.1 Ordering

The design type designation and the **serial number** on the rating plate must be specified when ordering spare parts. Any **number** marked on the part to be replaced is also to be quoted. If applicable, the item number on the exploded view must be specified.



Item Designation	Item Designation
1 Stator with winding	25 Grounding lug
2 Rotor with winding	26 Lifting eyelet
3 Brush bridge, Complete (without carbon brushes)	27 Feather key
4 End plate DE	28 Lubrication nipple
5 End plate NDE	29 Carbon brush
6 Bearing DE	30 Screw for bearing cover DE
7 Bearing NDE	31 Sealing disc for item 30 and 36
8 Bearing cover DE	32 Screw for end plate without lifting eyelet
10 Bearing balancing ring NDE	33 Screw for cover plate
11 Sealing cover	34 Screw for end plate with lifting eyelet
12 Inner ring DE	35 Screw for cover plate
13 Shaft seal ring DE	36 Screw for bearing cover NDE
14 Cover plate. Air outlet	37 Screw for sealing cover NDE
15 Cover plate, closed	38 Screw for brush bridge
16 Terminal box	39 Spring washer for item 38
17 Terminal box cover	40 Screw for terminal box
18 Seal terminal box	41 Screw for terminal box cover
19 Seal terminal box cover	42 Lock washer for item 41
20 Auxiliary terminal box	43 Screw for grounding lug
21 Cable gland for main terminal	44 Lock washer for item 43
22 Cable gland for auxiliary terminal	45 Screw for auxiliary terminal box terminals
23 Dummy cable gland for main terminal	46 Locking screw
24 Dummy cable gland for auxiliary terminal	47 Fan wheel (only with intrinsic cooling)

Figure 1 - Exploded view